

WISIR SOLUTIONS LABS

EMBEDDED IN RESEARCH
GROUNDED IN SYSTEMS THINKING AND CHANGE
BASED IN MULTI-SECTORAL PARTICIPATORY DESIGN



MAKING SENSE OF THE SYSTEM

system mapping | leverage point identification | key informant interviews
analysis of existing literature | journey mapping | systemic literature reviews
empathy mapping | ethnographic research support
appreciative inquiry | world café | open houses

DESIGNING ALTERNATIVES

ideation: gallery exercise | desirability, feasibility, viability & impact screening
business model canvas | computer simulation modeling | survey methods
participatory budgeting voting system design | SWOT analysis
weighted voting systems | nemesis exercise | horns of the dilemma
backcasting | three horizons

PROTOTYPING SOLUTIONS

participant-led prototyping & prototype delivery | idea generation
domain-related mini case studies | flourishing business model canvas

SUSTAINING AND SCALING IMPACT

participant-led prototype evaluation | developmental evaluation
social finance development & design | participatory governance design
teaching case development | peer-based education

INNOVATION LAB TOOLS

The Waterloo Institute for Social Innovation and Resilience (WISIR) is an applied interdisciplinary research group housed at the University of Waterloo. Consistently ranked Canada's most innovative university, Waterloo champions a culture of curiosity, exploration, risk-taking, entrepreneurship, global stewardship and leadership. We bring bold ideas and brilliant minds together - inspiring innovations with global impact today and in the future. UW houses over 1,200 academic staff, 31,000 undergraduate students, and 5,000 graduate students. WISIR is housed in the University of Waterloo's Faculty of Environment, the largest in the country, which also includes the only School of Planning in Canada to offer degree programs at the Bachelor's, Master's and PhD levels.

WISIR has developed a **Social Innovation Lab** process that is intended to support groups with different perspectives and interests in addressing a complex social problem. This approach highlights the role of integrating cutting-edge research and modelling into co-design Solutions Lab processes. WISIR's thought leadership in social innovation and its deep embedding within the University of Waterloo make it a leading center for Solutions Labs that have scalable research- or education-

WISIR is the direct descendant of Social Innovation Generation at Waterloo (**SiG@Waterloo**), a national applied social innovation collaboration that has advanced the role of social innovation in Canada. This has placed WISIR as an international thought-leader in social innovation research, education, and applied social innovation design processes with a particular emphasis on how social innovations move to scale and transform complex systems.



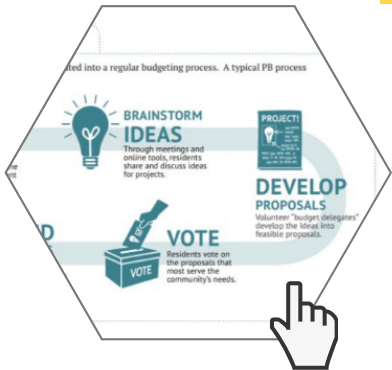
evolv1 CULTURE & SUSTAINABILITY



SYSTEM MAPPING
LEVERAGE POINT IDENTIFICATION
PARTICIPANT-LED PROTOTYPING &
PROTOTYPE DELIVERY
PARTICIPANT-LED PROTOTYPE
EVALUATION

Application of Solutions Lab processes in a shared physical space to advance a culture of sustainability within a multi-tenant green commercial office building.

CITY OF KITCHENER PARTICIPATORY BUDGET PILOT



OPEN HOUSES
SURVEY METHODS
PARTICIPATORY BUDGETING
VOTING SYSTEM DESIGN
COMMUNICATION & OUTREACH

Collaboration with the City of Kitchener for a neighbourhood-based participatory budget engagement to redesign two local parks based on resident suggestions and priorities.

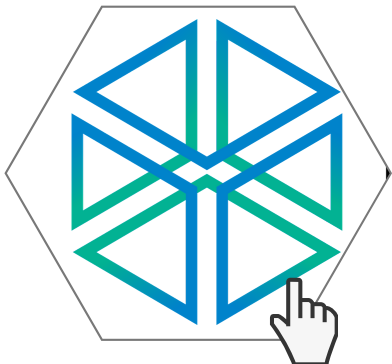
UNION SUSTAINABLE DEVELOPMENT COOPERATIVE



VALUES MAPPING
AFFORDABLE HOUSING EDUCATION
STRATEGIC GOVERNANCE DESIGN
SOCIAL FINANCE MECHANISM DESIGN
COOPERATIVE GOVERNANCE

Solutions lab in support of a community-based affordable housing financing model through membership-led strategic codesign.

LEADERSHIP WATERLOO REGION



VIRTUAL WORLD CAFÉ
CAPACITY-BUILDING IN
ETHNOGRAPHIC RESEARCH
PARTICIPANT-LED PROTOTYPING
PARTICIPATORY SYSTEM MAPPING
CURRICULUM DEVELOPMENT &
DELIVERY IN SOCIAL INNOVATION
THEORY

Integration of Solutions Lab processes into a professional development program which convened local community leaders to enable new affordable housing initiatives alongside building multi-sector training to develop local leaders.

SAMPLE PROJECTS

PRINCIPAL CONSULTANT

Sean Geobey is the Co-Director of the Waterloo Institute for Social Innovation and Resilience (WISIR) and Assistant Professor at the University of Waterloo's School of Environment, Enterprise and Development (SEED).



SGEOBEY@UWATERLOO.CA | 519-888-4567 EXT. 48680

CONSULTANT TEAM MEMBERS

Tia Brierley

Sean Campbell

SCALED PURPOSE | UNION SUSTAINABLE COOP

Tara Campbell

DAVID SUZUKI FOUNDATION

Ahmed Khanji

Sam Laban

THE GUELPH LAB

Anthony Piscitelli

CONESTOGA COLLEGE | YNCB

Meg Ronson

UNIVERSITY OF WATERLOO | COOPZONE

Ola Tjornbo

ARCHIPELAGO CONSULTANTS

Kirsten Wright

UNIVERSITY OF WATERLOO

CONSULTING ADVISORS

Frances Westley
Professor emeritus
University of Waterloo

Dawn Parker
Professor, School of Planning
University of Waterloo

Dan McCarthy
Director, WISIR
Associate Director,
Undergraduate Studies &
Assistant Professor, School of
Environment, Resource and
Sustainability
University of Waterloo.



TEAM